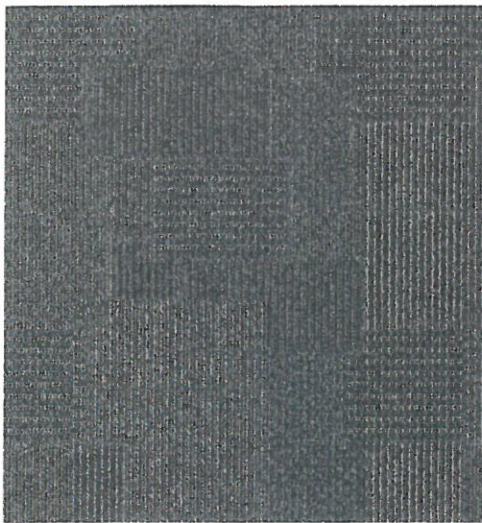


DESIGN MEDLEY II TILE 988 MULTI-DIRECTIONAL

Design Medley II combines a mixture of textural overlaid framework grids that interweave and create gradual color changes across the pattern for unique and mergeable installations. Design Medley II features six unique multi-colorations inspired by nature's raw beauty, offering beautiful aesthetics that deliver versatility and functionality in order to adapt to today's design trends in commercial interior spaces.



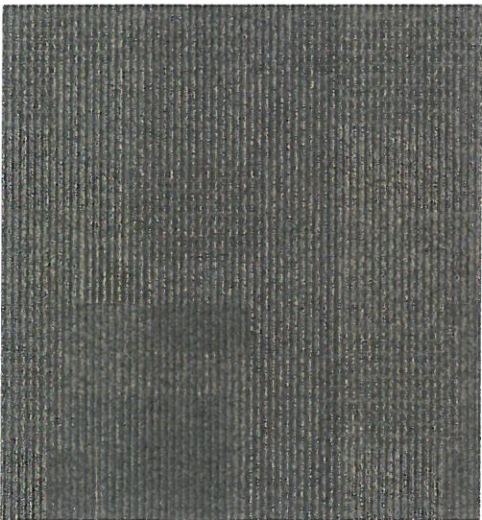
Assortment 556



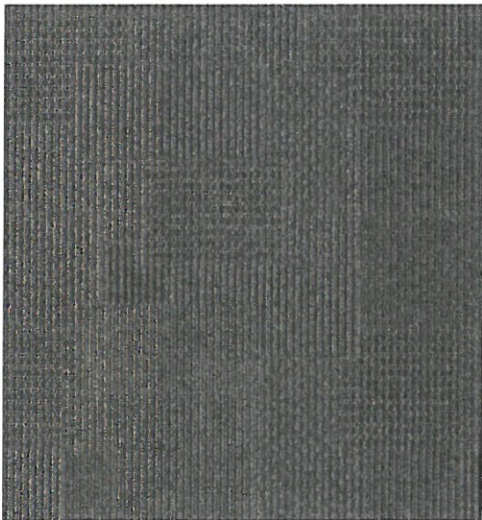
Intermix 727



Mixture 848



Tempo 869

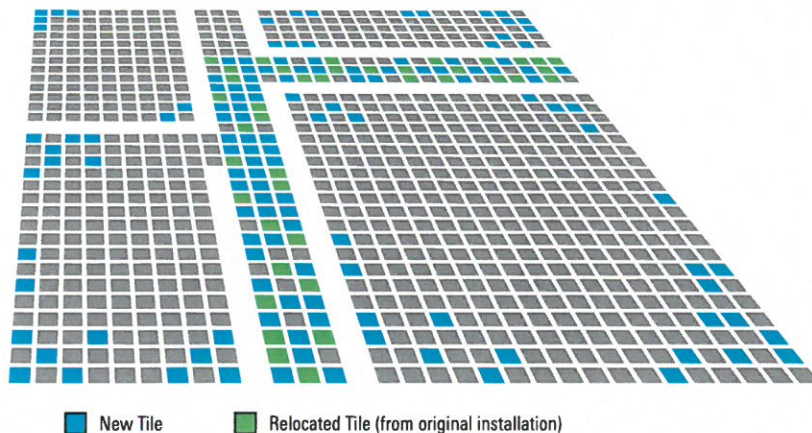


Rhythm 959



Variation 988

Replacing carpet tiles from different dye lots just got easier. With Mergeable Dye lot Carpet from Aladdin Commercial you can now confidently replace worn out carpet tiles without effecting the look of your spaces.



STEP 1

REMOVE WORN TILES

Take up and discard worn out/stained carpet tiles from original installation.

STEP 2

MIX NEW TILES FROM MULTIPLE DYELOTS AND/OR CARTONS

Dye lots will vary slightly so mix them.

STEP 3

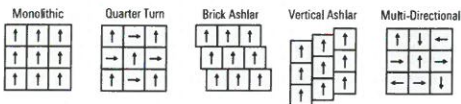
BLEND IN OLD AND NEW TILES

Take some unworn tiles from other rooms in the installation, replace them with new tiles, then mix them with the mergeable dye lot tiles and replace the worn out tiles you removed.

DESIGN MEDLEY II/2B137

| | |
|---------------------------------|--|
| Style Name / Number | Design Medley II / 2B137 |
| Construction | Tufted |
| Surface Appearance | Textured Patterned Loop |
| Gauge | 1/12" (47.00 rows per 10 cm) |
| Pile Weight | 22 oz/yd2 (746g/m2) |
| Dye Method | 100% Solution Dyed |
| Fiber Type | Colorstrand® SD Nylon |
| Stain Release Technology | Mohawk Protection Plus Stain |
| Density | 9,000 |
| Soil Release Technology | Mohawk Protection Plus Soil |
| Primary Backing | Non-Woven Synthetic |
| Secondary Backing | UltraSet® |
| Recycled Content | Contains a minimum 39% pre-consumer recycled content by total product weight |
| Indoor Air Quality | Green Label Plus Certified # 1098 |
| NSF 140 | Gold |
| Size | 24" x 24" (.6096 m x .6096 m) |
| Yds./Ctn | 8 |
| Installation Method | Monolithic / Vertica Ashlar / Brick Ashlar / Quarter Turn / Multi-Directional |
| Flammability | ASTM E 648 Class 1 (Glue Down) |
| Smoke Density | ASTM E 662 Less than 450 |
| Static Propensity | AATCC-134 Under 3.5 KV |
| Country of Origin | Made in USA |
| Warranties | <p>Lifetime Limited Wear Warranty</p> <p>Lifetime Limited Static Protection Warranty</p> <p>Lifetime Limited Edge Ravel, Zippering, Delamination and Dimensional Stability Warranty</p> <p>Lifetime Limited Colorfastness to Light Warranty</p> <p>10-Year Limited Colorfastness to Atmospheric Contaminants Warranty</p> <p>10-Year Limited Stain Resistance Warranty</p> |

Installation Methods:



Up to 2,000 sq. yds. available within 10 business days or less

colorSTRANDSD
The Premier Solution Dye Commercial Fiber



DESIGN MEDLEY II QA137

PRODUCT SPECIFICATIONS

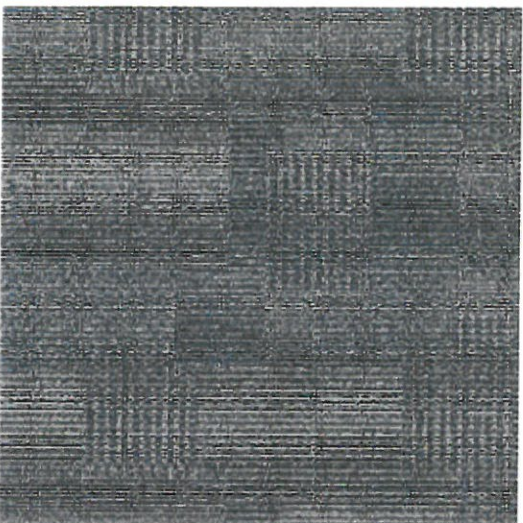
| | |
|--------------------------|--|
| STYLE NAME / NUMBER | Design Medley II / QA137 |
| PRODUCT TYPE | Carpet Tile |
| COLLECTION NAME | Rediscovery |
| FIBER TYPE | Colorstrand SD Nylon |
| BACKING | UltraSet |
| CONSTRUCTION | Tufted |
| SURFACE APPEARANCE | Textured Loop |
| DYE METHOD | Solution Dyed |
| INSTALLATION METHODS | Monolithic, VerticalAshlar, BrickAshlar, QuarterTurn, MultiDirectional |
| GAUGE | 1/12 (47.00 rows per 10 cm) |
| STITCHES PER INCH | 9.73 (38.32 per 10cm) |
| STAIN RELEASE TECHNOLOGY | Mohawk Protection Plus Stain |
| DENSITY | 9,000 |
| FLAMMABILITY | ASTM E 648 Class I (Glue Down) |
| SMOKE DENSITY | ASTM E 662 Less than 450 |
| STATIC PROPENSITY | AATCC-134 Under 3.5 KV |
| IAQ GREEN LABEL PLUS | Green Label Plus 1098 |
| SOIL RELEASE TECHNOLOGY | Mohawk Protection Plus Soil |
| WEIGHT DENSITY | 159,853 |
| TUFTED WEIGHT | 22 oz. per sq. yd. (746 g/m2) |
| WARRANTIES | Lifetime Limited Wear Warranty Lifetime Limited Static Protection Warranty Lifetime Limited Edge Ravel, Zippering, Delamination and Dimensional Stability Warranty Lifetime Limited Colorfastness to Light Warranty 10 Year Limited Stain Resistance Warranty, 10 Year Limited Colorfastness to Atmospheric Contaminants |

For additional technical information, please contact Technical Services at 800.833.6954.



Design Medley II

Carpet | Style: QA137



Assortment

Color: 556

[DOWNLOAD SELL SHEET](#)



[DOWNLOAD IMAGE](#)

[Quarter Turn](#)

[Multi Directional](#)

[Monolithic](#)

[Vertical Ashlar](#)

[Brick Ashlar](#)

6 colors

